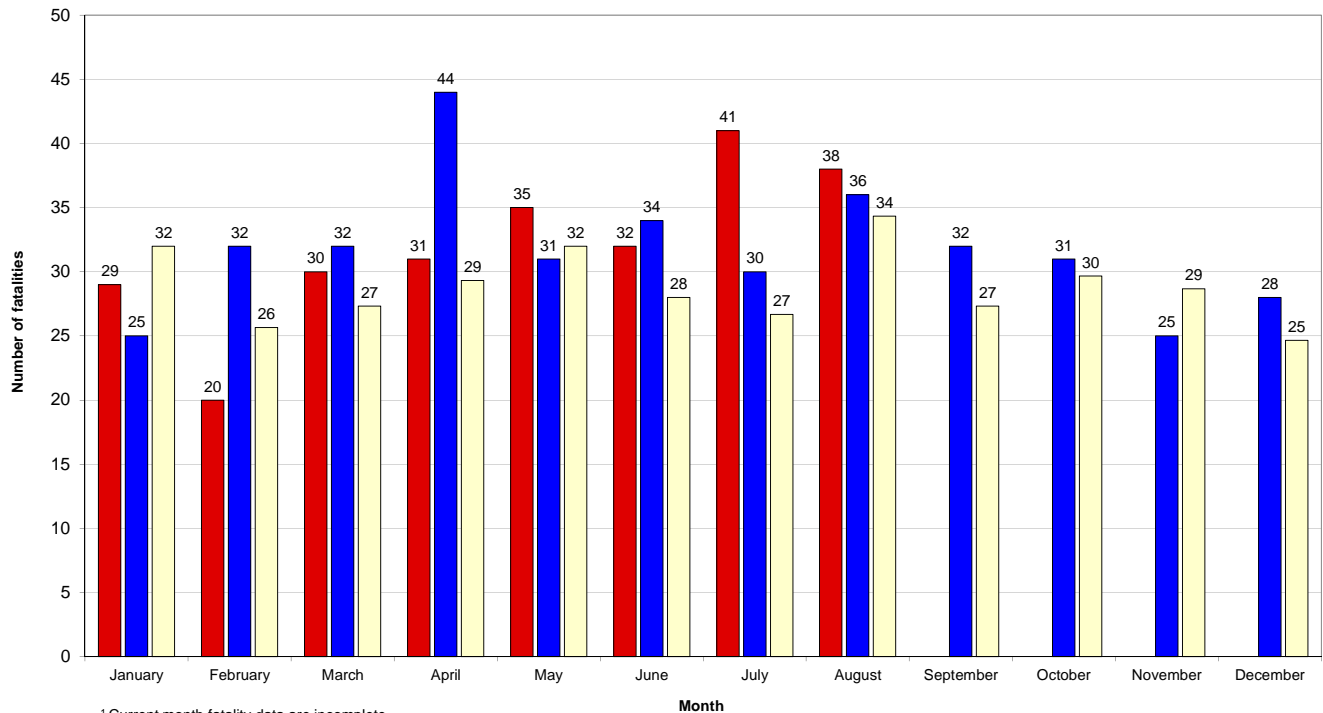


	2017	2016	+/-	% change
Calendar year to date	256	263	-7	-3%
August to date	38	35	3	9%
12-month period to date	373	385	-12	-3%

Fatalities 12-month moving total - 2012 to date



Road fatality comparative statistics by month<sup>1</sup> for 2016<sup>2</sup>, 2017<sup>2</sup> and the average for the 3-year period 2014-2016<sup>2</sup>



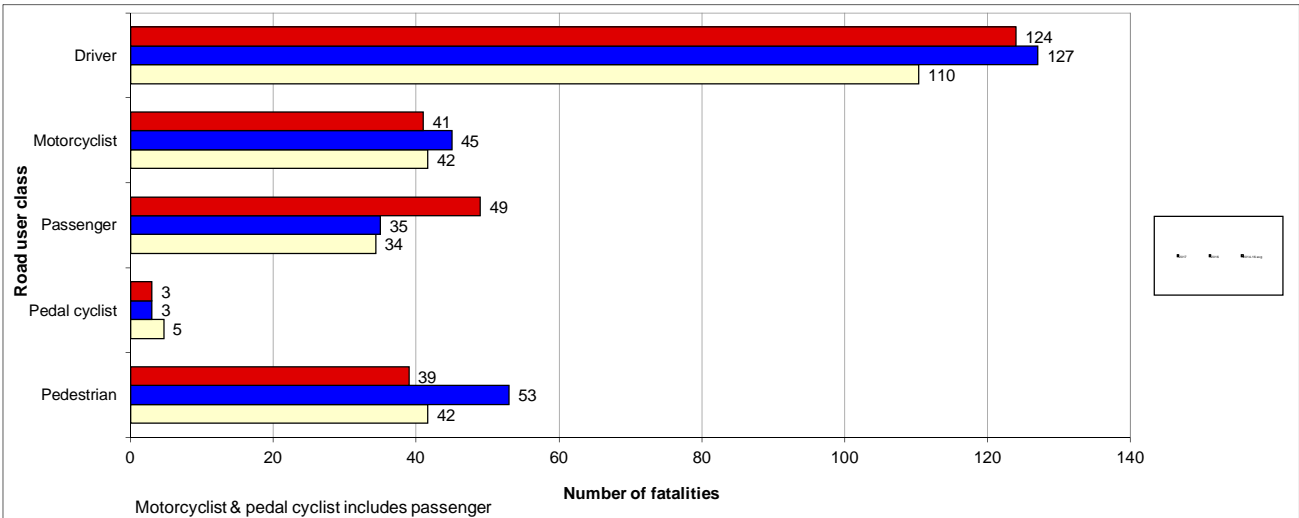
<sup>1</sup> Current month fatality data are incomplete  
<sup>2</sup> Fatality data are preliminary and subject to change



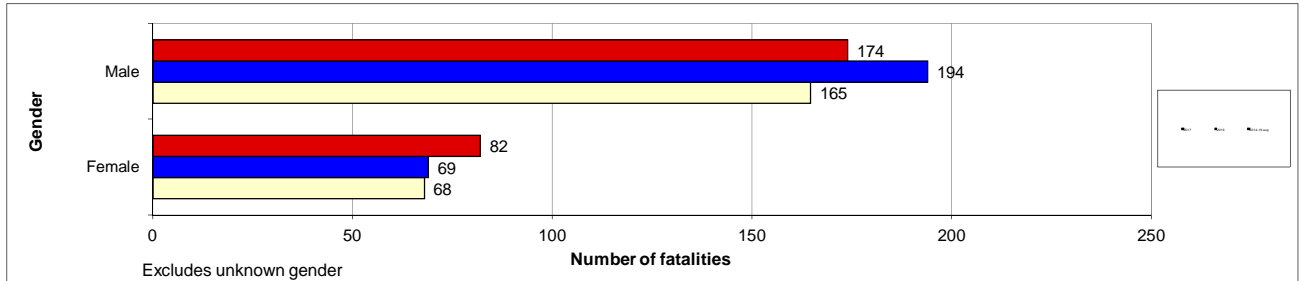
Preliminary Data - Note: Fatalities will be removed from statistics if subsequent Police or Coronial investigation shows that they did not fall within National reporting guidelines. Fatalities will be added from a crash occurring prior to today's date where a person subsequently dies within 30 days or the crash is reported late. Fatalities are deaths which occurred within 30 days of a crash as a result of injuries received in the crash. The crash must have occurred within the surveyed road reserve.

Road fatality comparative statistics for the period 01 January to 29 August 2016<sup>2</sup>, 2017<sup>2</sup> and the average for the same period in 2014, 2015 and 2016<sup>2</sup>

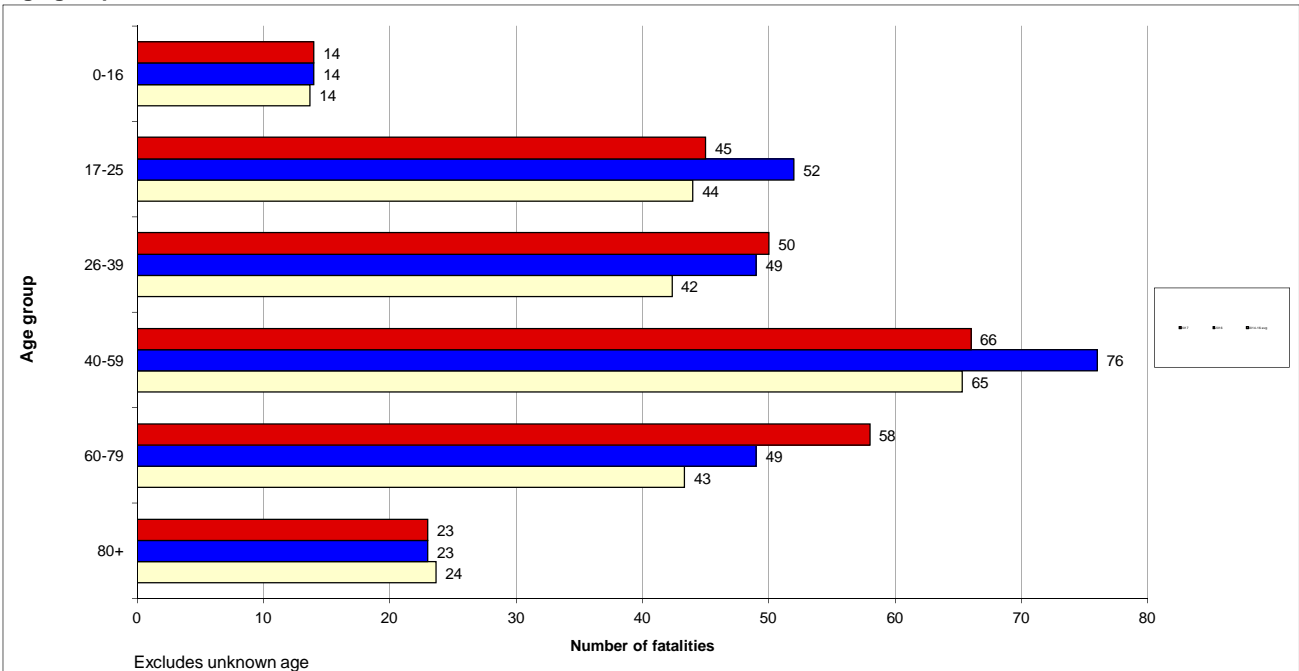
Road user class



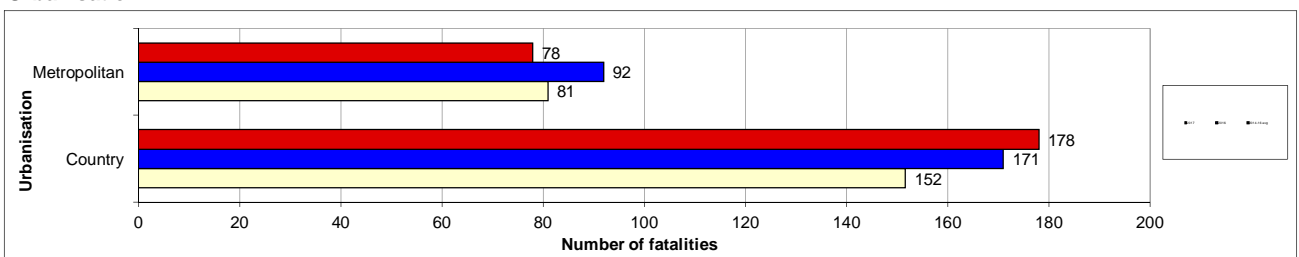
Gender



Age group



Urbanisation



<sup>2</sup> Fatality data are preliminary and subject to change

Road fatality comparative statistics for the period 01 January to 29 August 2016<sup>2</sup>, 2017<sup>2</sup> and the average for the same period in 2014, 2015 and 2016<sup>2</sup>

**Road user class**

	2017	2016	+/-	% change	3-year average
Driver	124	127	-3	-2%	110.3
Motorcyclist	41	45	-4	-9%	41.7
Passenger	49	35	14	40%	34.3
Pedal cyclist	3	3	0	0%	4.7
Pedestrian	39	53	-14	-26%	41.7

Motorcyclist & pedal cyclist includes passenger

**Gender**

	2017	2016	+/-	% change	3-year average
Male	174	194	-20	-10%	164.7
Female	82	69	13	19%	68.0

Excludes unknown gender

**Age group**

	2017	2016	+/-	% change	3-year average
0-16	14	14	0	0%	13.7
17-25	45	52	-7	-13%	44.0
26-39	50	49	1	2%	42.3
40-59	66	76	-10	-13%	65.3
60-79	58	49	9	18%	43.3
80+	23	23	0	0%	23.7

Excludes unknown age

**Urbanisation**

	2017	2016	+/-	% change	3-year average
Metropolitan	78	92	-14	-15%	81.0
Country	178	171	7	4%	151.7

<sup>2</sup> Fatality data are preliminary and subject to change

# Road Toll Update for NSW

up to and including  
Tuesday, 29 August 2017

**Fatalities advised since last update issued:** 1  
**Fatalities excluded since last update issued:** 1

	CALENDAR YEAR TO MIDNIGHT 29 August					12-MONTH PERIOD ENDING 29 August				
	2017 (Prelim)	2016 (Prelim)	DIFF.	3-YEAR AVERAGE	DIFF.	2017 (Prelim)	2016 (Prelim)	DIFF.	3-YEAR AVERAGE	DIFF.
<b>Fatal crashes</b>	<b>232</b>	<b>246</b>	<b>-14</b>	<b>219</b>	<b>13</b>	<b>342</b>	<b>357</b>	<b>-15</b>	<b>323</b>	<b>19</b>
<b>Fatalities</b>										
Driver	124	127	-3	110	14	180	184	-4	163	17
Passenger	49	35	14	34	15	68	55	13	53	15
Motorcyclist*	41	45	-4	42	-1	63	69	-6	66	-3
Pedestrian	39	53	-14	42	-3	57	70	-13	56	1
Pedal cyclist*	3	3	0	5	-2	5	7	-2	8	-3
Other	0	0	0	0	0	0	0	0	0	0
<b>TOTAL KILLED</b>	<b>256</b>	<b>263</b>	<b>-7</b>	<b>233</b>	<b>23</b>	<b>373</b>	<b>385</b>	<b>-12</b>	<b>346</b>	<b>27</b>

\* Includes passengers

<b>PRELIMINARY 2016 TOTALS:</b>	<b>Fatal crashes 356</b>	<b>Fatalities 380</b>
---------------------------------	--------------------------	-----------------------

Preliminary Data -Note: Fatalities will be removed from statistics if subsequent Police or Coronial investigation shows that they did not fall within National reporting guidelines. Fatalities will be added from a crash occurring prior to today's date where a person subsequently dies within 30 days or the crash is reported late. Typically, these variations may result in a statewide annual decrease of up to 12 fatalities from the initial preliminary figure.

[Click here](#) for more information about traffic crash statistics

[Click here](#) for more information about the Centre for Road Safety