



Road Toll Update for NSW

up to and including

Monday, 13 March 2023

Fatalities advised since last update issued: 0

Fatalities excluded since last update issued: 0

CALENDAR YEAR TO MIDNIGHT 13 March						12-MONTH PERIOD ENDING 13 March					
	2023 (Prelim)	2022 (Prelim)	DIFF.	3-YEAR AVERAGE	DIFF.	2023 (Prelim)	2022 (Prelim)	DIFF.	3-YEAR AVERAGE	DIFF.	
Fatal crashes	53	64	-11	58	-5	263	267	-4	282	-19	
Fatalities											
Driver	29	37	-8	28	1	127	143	-16	143	-16	
Passenger	6	7	-1	8	-2	42	29	13	40	2	
Motorcyclist	10	17	-7	13	-3	48	66	-18	61	-13	
Pedestrian	9	6	3	12	-3	54	36	18	45	9	
Pedal cyclist	3	1	2	3	0	10	8	2	11	-1	
Other	0	0	0	0	0	0	0	0	0	0	
Total Killed	57	68	-11	63	-6	281	282	-1	300	-19	

* Motorcyclist and pedal cyclist includes passengers

PRELIMINARY 2022 TOTALS:	Fatal crashes 274	Fatalities 292
---------------------------------	--------------------------	-----------------------

Preliminary Data - Note: Fatalities will be removed from statistics if subsequent Police or Coronial investigation shows that they did not fall within National reporting guidelines. Fatalities will be added from a crash occurring prior to today's date where a person subsequently dies within 30 days or the crash is reported late. Typically, these variations may result in a statewide annual decrease of up to 12 fatalities from the initial preliminary figure. Fatalities are deaths which occurred within 30 days of a crash as a result of injuries received in the crash. The crash must have occurred within the surveyed road reserve.



Road Toll Update for NSW

up to and including

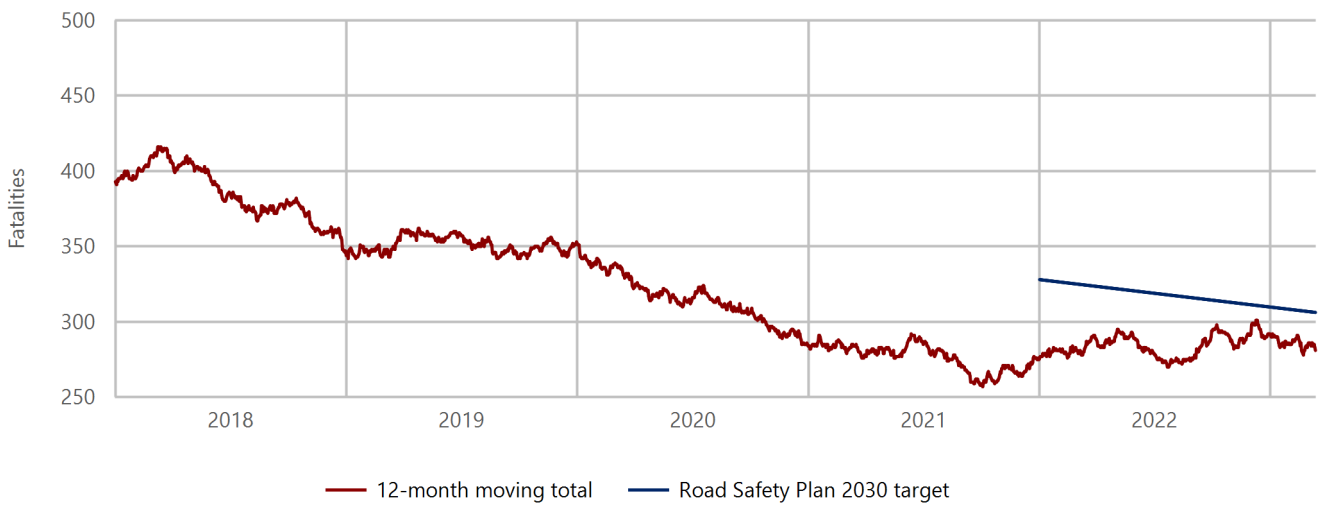
Monday, 13 March 2023

NSW Road Toll Statistics: Up to and including 13 March 2023

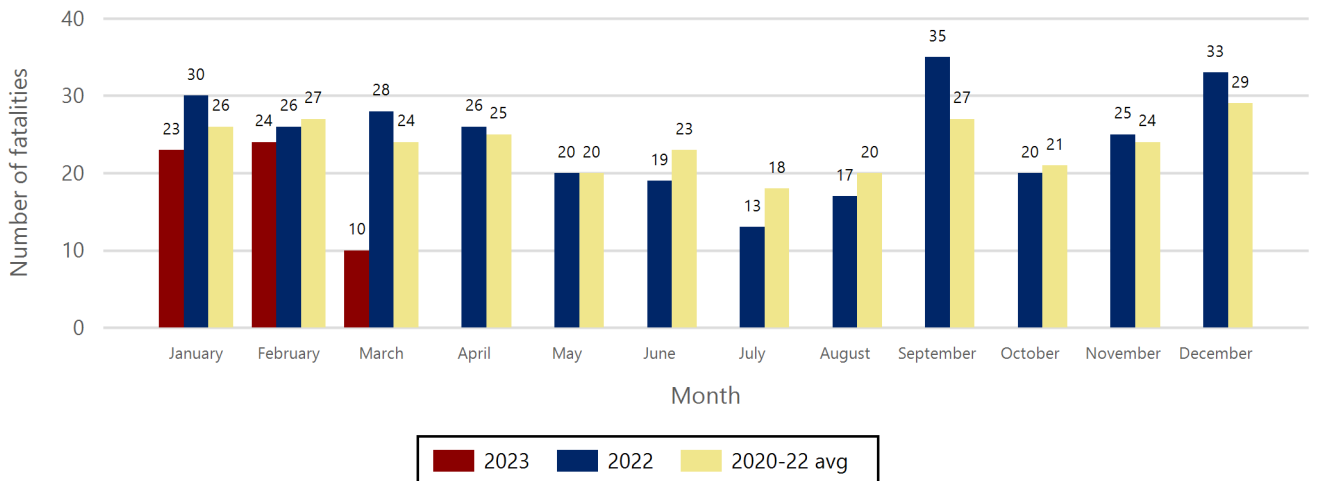
	2023	2022	+/-	% change
March to date	10	12	-2	-16.7
Calendar year to date	57	68	-11	-16.2
12-month period to date	281	282	-1	-0.4

NSW 50% Reduction Target : 306 , currently 25 under target

Fatalities 12-month moving total - 2018 to date



Road fatality comparative statistics by month for 2022, 2023 and the average for the 3-year period 2020-2022



	2023	2022
Data completeness status	(Prelim)	(Prelim)

Preliminary Data - Note: Fatalities will be removed from statistics if subsequent Police or Coronial investigation shows that they did not fall within National reporting guidelines. Fatalities will be added from a crash occurring prior to today's date where a person subsequently dies within 30 days or the crash is reported late. Typically, these variations may result in a statewide annual decrease of up to 12 fatalities from the initial preliminary figure. Fatalities are deaths which occurred within 30 days of a crash as a result of injuries received in the crash. The crash must have occurred within the surveyed road reserve.

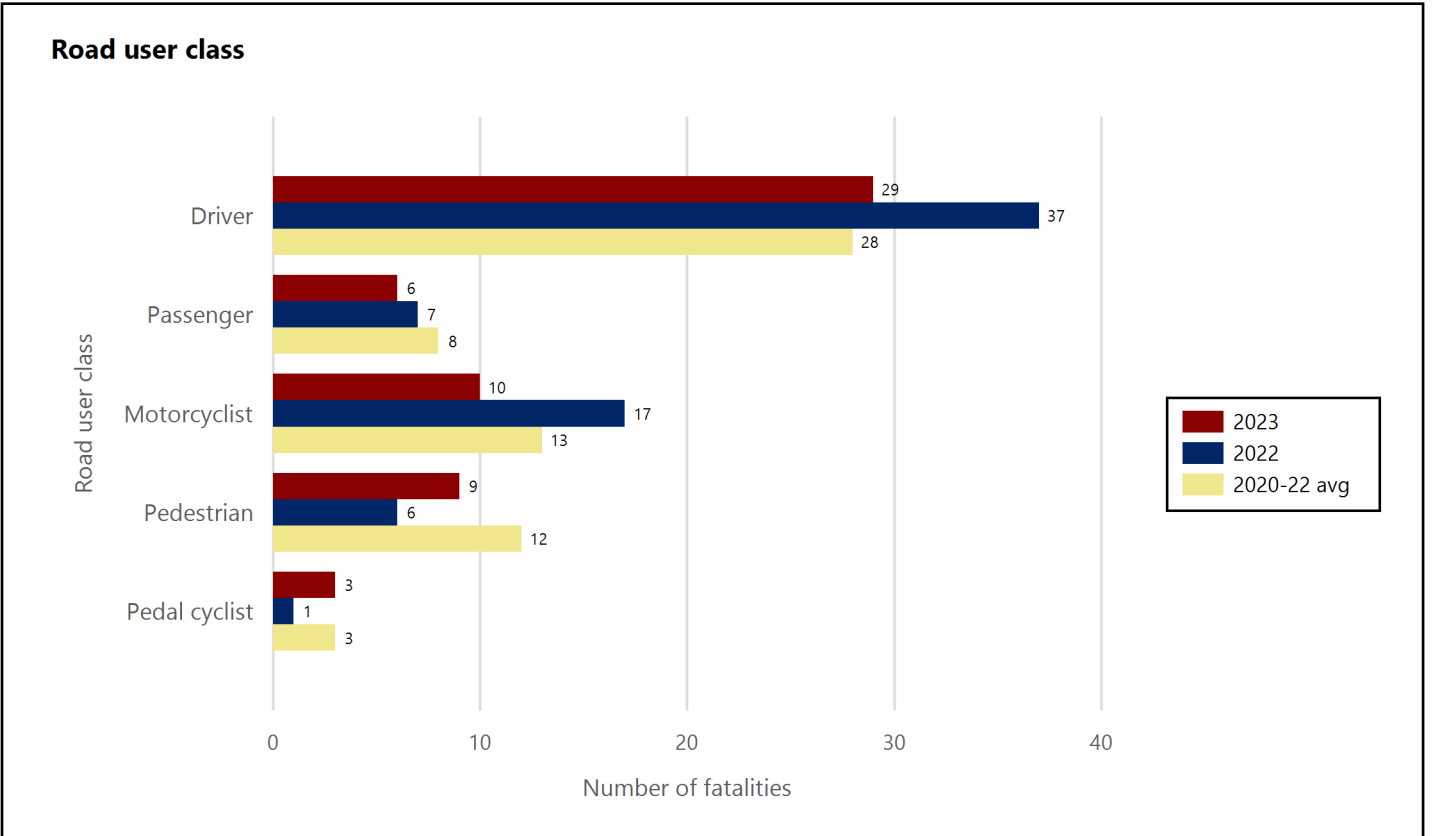


Road Toll Update for NSW

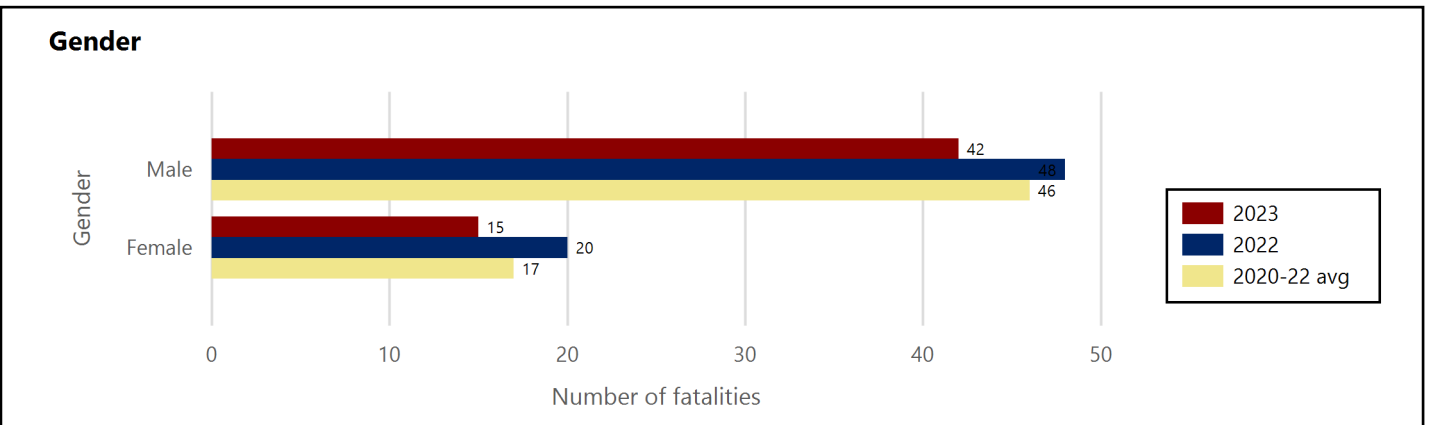
up to and including

Monday, 13 March 2023

Road fatality comparative statistics for the period 01 January to 13 March 2022, 2023 and the average for the same period in 2020, 2021 and 2022



Motorcyclist & pedal cyclist includes passenger



Excludes unknown gender

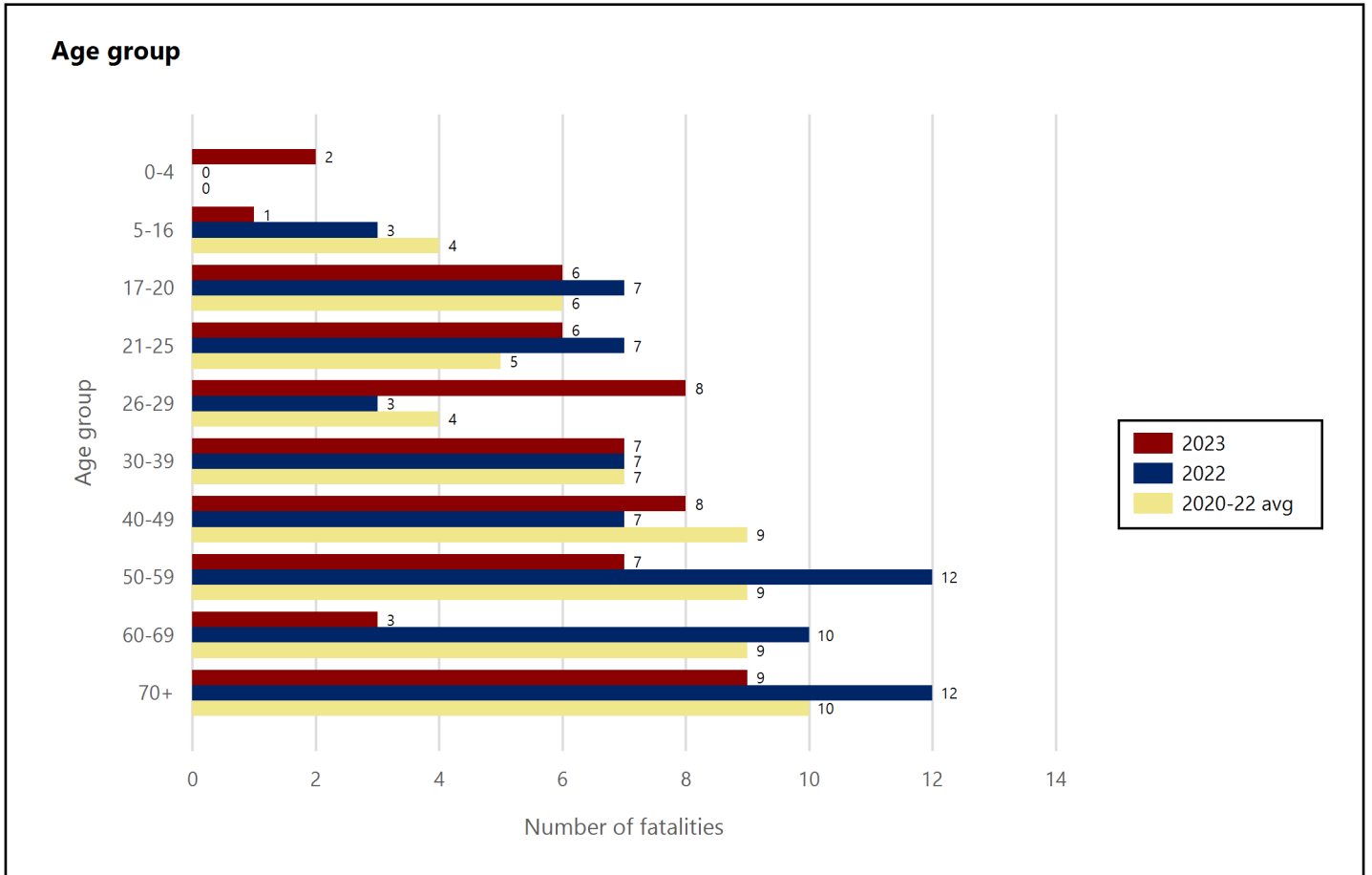


Road Toll Update for NSW

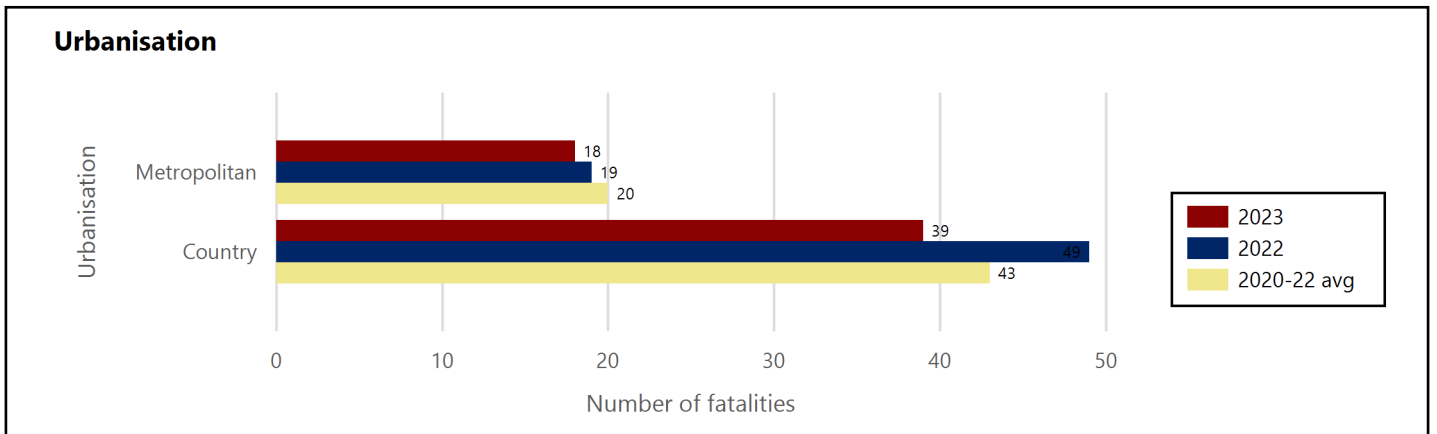
up to and including

Monday, 13 March 2023

Road fatality comparative statistics for the period 01 January to 13 March 2022, 2023 and the average for the same period in 2020, 2021 and 2022



Excludes unknown age



* Fatality data are preliminary and subject to change



Road Toll Update for NSW

up to and including

Monday, 13 March 2023

Road fatality comparative statistics for the period 01 January to 13 March 2022, 2023 and the average for the same period in 2020, 2021 and 2022

Road user class	2023	2022	+/-	% change	3-year average
Driver	29	37	-8	-21.6	28
Passenger	6	7	-1	-14.3	8
Motorcyclist	10	17	-7	-41.2	13
Pedestrian	9	6	3	50.0	12
Pedal cyclist	3	1	2	200.0	3

Motorcyclist & pedal cyclist includes passenger

Gender	2023	2022	+/-	% change	3-year average
Male	42	48	-6	-12.5	46
Female	15	20	-5	-25.0	17

Excludes unknown gender

Age group	2023	2022	+/-	% change	3-year average
0-4	2	0	2	N/A	0
5-16	1	3	-2	-66.7	4
17-20	6	7	-1	-14.3	6
21-25	6	7	-1	-14.3	5
26-29	8	3	5	166.7	4
30-39	7	7	0	0.0	7
40-49	8	7	1	14.3	9
50-59	7	12	-5	-41.7	9
60-69	3	10	-7	-70.0	9
70+	9	12	-3	-25.0	10

Excludes unknown age

Urbanisation	2023	2022	+/-	% change	3-year average
Metropolitan	18	19	-1	-5.3	20
Country	39	49	-10	-20.4	43

* Fatality data are preliminary and subject to change